



# INLET VACUUM FILTERS

"CSL" Series DN200-DN300 PN10 Pattern Flange

## APPLICATIONS & EQUIPMENT

- Vacuum Pumps & Systems – Roots, Side Channel, Rotary Vane, Screw, Piston
- Vacuum Packaging Equipment
- Vacuum Furnaces
- Blowers - Side Channel & Roots
- Intake Suction Filters
- Pneumatic Conveying Systems
- Remote Install for Piston, Screw & Centrifugal Compressors
- Factory Automation Equip
- Ash Handling
- Food Industry
- Paper Processing
- Glass, Ceramic Processing
- Waste Water Treatment
- Woodworking
- Cement
- Bag House Systems
- Envelope Manufacturing
- Chemical Processing

## FEATURES & SPECIFICATIONS

- **Vacuum level:** Typically  $1 \times 10^{-3}$  mmHg ( $1.3 \times 10^{-3}$  mbar)
- Heavy duty T bolts for easy maintenance
- Rugged all steel construction w/baked enamel finish
- Low pressure drop
- Positive engagement O-ring seal system
- **Large** dirt holding capacity and **Easy** field cleaning, especially when mounted horizontally or inverted
- Inlet/outlet 1/4" gauge taps
- Hydrostatically tested to 0.5 bar pressure for vacuum tightness
- Polyester: 99%+ removal efficiency standard to 5 micron
- Paper: 99%+ removal efficiency standard to 2 micron
- Temp (continuous): min -26°C (-15°F) max 104°C (220°F)
- Filter change out differential: 255 - 380 mm H<sub>2</sub>O over initial delta P
- Pressure drop graphs available upon request

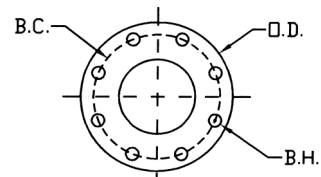
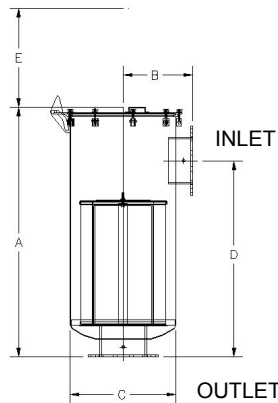
## OPTIONS (Inquiries Encouraged)

- Straight-Through Configurations
- Various media
- Larger sizes available
- Available in **Stainless Steel**
- Epoxy coated housings
- Support brackets
- Custom connections
- Activated carbon prefilters to reduce order

## CONFIGURATION



## DRAWING



Flange Orientation

Note: All side inlet to bottom outlet flanges are orientated "split center".

Dimension tolerance  $\pm 6$  mm

**I = Industrial Duty S = Severe Duty E = Extreme Duty**

	with Polyester Element	with Paper Element	Flange Inlet & Outlet	DIMENSIONS - mm					Rated Flow m <sup>3</sup> /h Nominal Rating	Element Rating	Approx. Wt. Kgs
				A	B	C	D	E			
I	CSL-377P-DN200	CSL-376P-DN200	DN200	965	356	572	648	508	3060	3105	83
S	CSL-385P-DN250	CSL-384P-DN250	DN250	1130	410	686	864	381	4930	5610	115
S	CSL-485P-DN300	CSL-484P-DN300	DN300	1130	410	686	864	559	7990	8000	125
S	*CSL-685P-DN250	CSL-384P(2)-DN250	DN250	1461	406	672	1143	838	4930	11220	171
S	*CSL-685P-DN300	CSL-384P(2)-DN300	DN300	1461	406	672	1143	838	8415	11220	171
S	*CSL-485P(2)-DN300	CSL-484P(2)-DN300	DN300	1765	406	672	1448	635	8415	16000	209

\* Options: Double stack housings are available. Please contact representative for more information.

PN10 Pattern Flange	Dimensions - mm			No. of Holes	Thickness Flg. mm
	O.D.	B.C.	B.H.		
DN200	340	295	22	8	24
DN250	395	350	22	12	26
DN300	445	400	22	12	26

Note: Model offerings and design parameters may change without notice.