



Inlet Vacuum Filters

"CSL" Series 4" - 6" 125/150# Pattern Flange

APPLICATIONS & EQUIPMENT

- Vacuum Pumps & Systems – P.D., Side Channel, Rotary Vane, Screw, Piston
- Vacuum Packaging Equipment
- Vacuum Furnaces
- Blowers - Side Channel & P.D.
- Intake Suction Filters
- Pneumatic Conveying Systems
- Remote Install for Piston, Screw & Centrifugal Compressors
- Factory Automation Equip
- Ash Handling
- Food Industry
- Paper Processing
- Glass, Ceramic Processing
- Waste Water Treatment
- Woodworking
- Cement
- Bag House Systems
- Envelope Manufacturing
- Medical Industry
- Chemical Processing

FEATURES & SPECIFICATIONS

- **Vacuum level:** Typically 1×10^{-3} mmHg (1.3×10^{-3} mbar)
- Polyester: 99%+ removal efficiency standard to 5 micron
- Paper: 99%+ removal efficiency standard to 2 micron
- Heavy duty T bolts for easy maintenance
- Hydrostatically tested to 0.5 bar pressure for vacuum tightness
- Low pressure drop
- Positive engagement O-ring seal system
- **Large** dirt holding capacity and **Easy** field cleaning, especially when mounted horizontally or inverted
- Inlet/outlet 1/4" gauge taps standard
- Rugged all steel construction w/baked enamel finish
- Temp (continuous): min -15°F (-26°C) max 220°F (104°C)
- Filter change out differential: 10" - 15" H₂O over initial delta P
- Pressure drop graphs available upon request

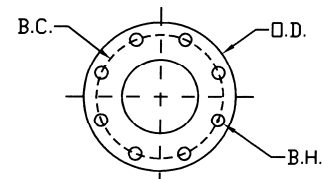
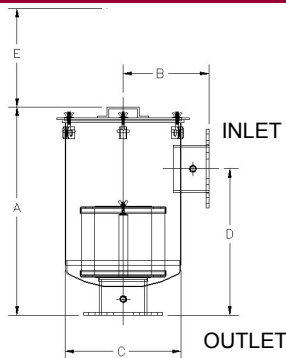
OPTIONS (Inquiries Encouraged)

- Various media
- Larger sizes available
- Straight-Through Configurations
- Available in **Stainless Steel**
- Epoxy coated housings
- Support brackets
- Special connections
- Activated carbon prefilters to reduce order

CONFIGURATION



DRAWING



Flange Orientation

Note: All side inlet to outlet flanges are orientated "split center".

Dimension tolerance $\pm 1/4"$

I = Industrial Duty S = Severe Duty E = Extreme Duty

	with Polyester Element	with Paper Element	Flg Inlet & Outlet	DIMENSIONS - inches					Rated Flow SCFM		Approx. Wt. lbs
				A	B	C	D	E	Nominal Rating	Element Rating	
I	CSL-235P-400F	CSL-234P-400F	4"	27 1/8	9	14	18 1/2	15	520	570	62
S	CSL-335P-400F	CSL-334P-400F	4"	27 1/8	9	14	18 1/2	20	520	800	64
I	CSL-245P-500F	CSL-244P-500F	5"	28 1/8	11	18 1/2	19 1/2	15	800	880	88
S	CSL-345P-500F	CSL-344P-500F	5"	28 1/2	11	18 1/2	19 1/2	20	800	1100	90
I	CSL-275P-600F	CSL-274P-600F	6"	29 1/8	12	18 1/2	20 1/2	15	1100	1100	110
S	CSL-375P-600F	CSL-374P-600F	6"	29 1/8	12	18 1/2	20 1/2	20	1100	1500	113

125/150# Pattern Flg	DIMENSIONS - inches			No. of Holes	Flange Thickness
	O.D.	B.C.	B.H.		
4"	9	7 1/2	0.75	8	0.38
5"	10	8 1/2	0.88	8	0.38
6"	11	9 1/2	0.88	8	0.38

Note: Model offerings and design parameters may change without notice.

Solberg – Discover the Possibilities

CSL34-7365

1151 Ardmore Ave. • Itasca, IL 60143 USA

Sales/Service: 630.773.1363 • Fax: 630.773.0727

E-mail: sales@solbergmfg.com • Web Site: www.solbergmfg.com

INLET VACUUM FILTERS
CSL, ST, CT, VL, VS, LRS Series