

# DX1012-T

The DX modular housing arrangement offers a flexible and space conscious solution to integrating our innovative DXO Cartridge to both new and existing systems. We provide up to 12 cartridges as a single unit in a compact and easily maintainable layout.

The unit can be supplied with a number of standard options to provide an effective conditioning and monitoring package to suit the majority of systems. The flexibility of the unit allows tailoring to a customer's specific requirements.

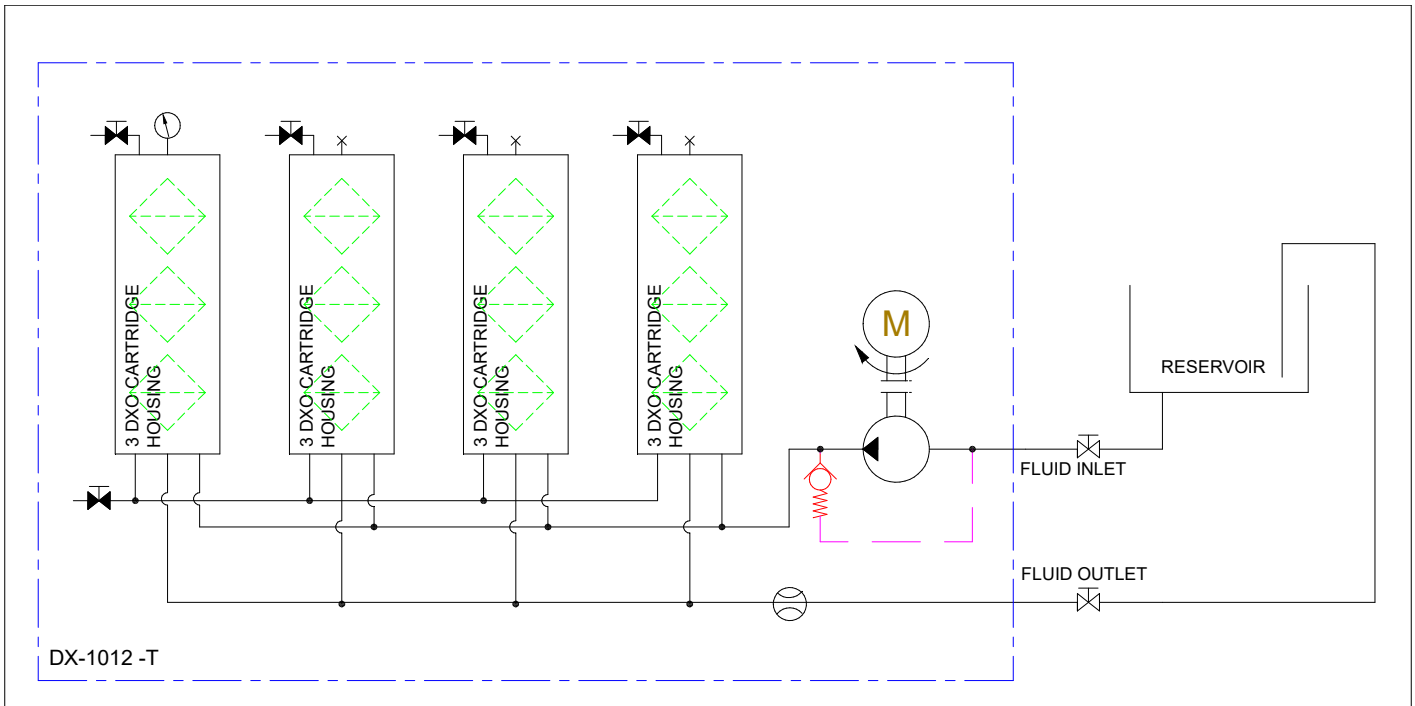


## DXO Cartridge

Dirt capacity:	1955 g, 0.1 micron
Water absorption, free and bound:	M 2600ml
Material insert:	Cellulose, Polypropylene



## Technical Specification

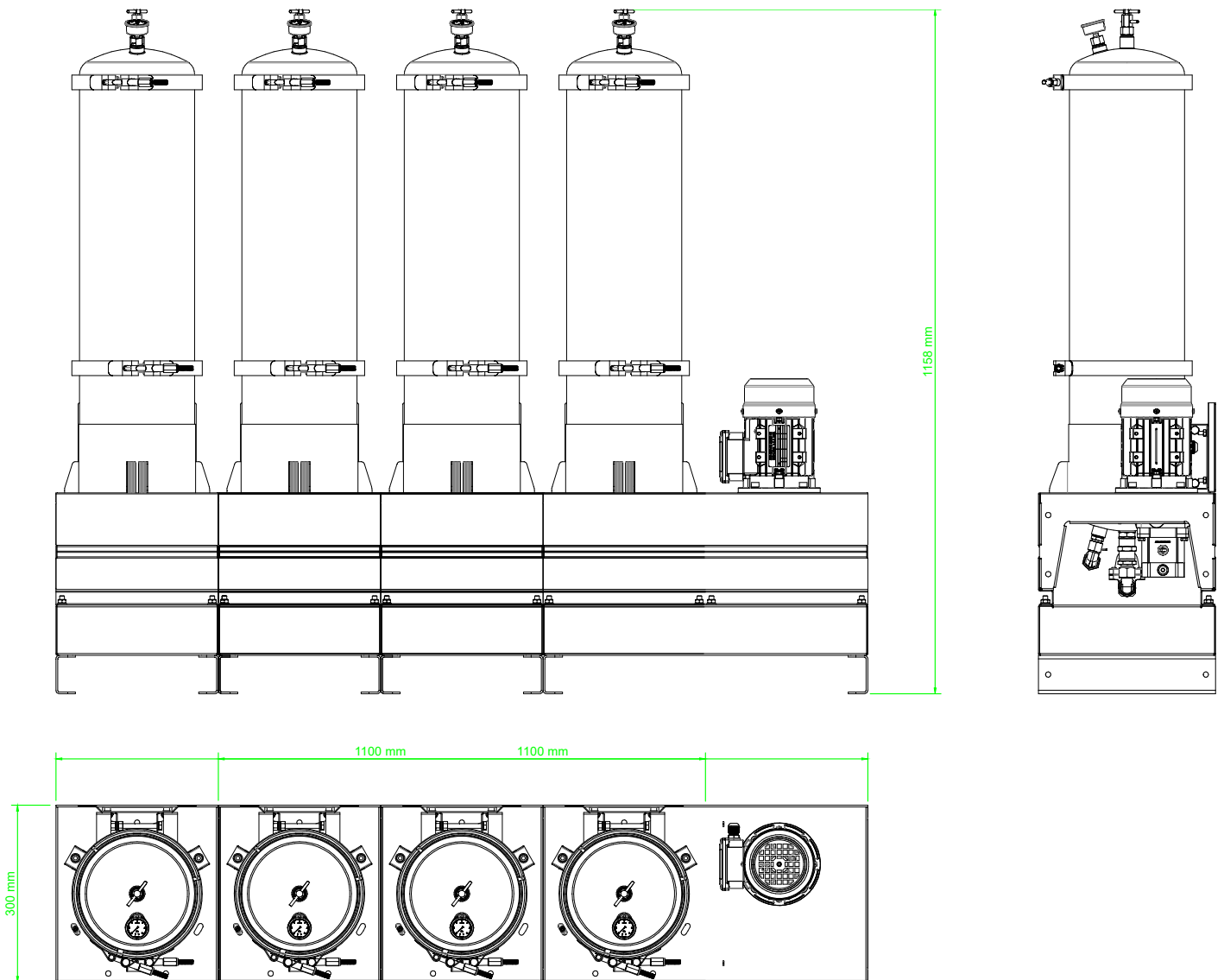


### DX1012-T

AC Power	0.25-0.37KW,110, 220-480 VAC, 50/60Hz
Pump Connection Ports	3/8" BSP In & Out
Sight Glass	Yes
Hydraulic Oil Volume Capacity	9000 Litres @ 32cSt
Typical Flow	3 Lpm @ ISOVG32
Micron Rating	0,1 Micron
Weight[kgsl]	26,7
Measure [mm]	H 984 x D 261 x L 437
Material	SS316
DXO Cartridge	x 12



## General Arrangement



## Model Code Selector

### Model Code Selector

Series    **A**    **B**    **C**    **D**    **E**    **F**    **G**    **H**    **I**    **J**    **K**    **L**  
**DX**    10 **12** - **T**    **G**    -    -    -    -    -    -    **1**    **K**    **L**    -    **NNN**

(Special Execution On Request)

**A Configuration**

1	1 x Single Canister - 1 x DX Cartridge
2	1 x Single Canister + 1 x Dual Extender - 2 x DX Cartridge
3	1 x Single Canister + 1 x Triple Extender - 3 x DX Cartridge
4	2 x Single Canister + 2 x Dual Extenders - 4 x DX Cartridge
6	2 x Single Canister + 2 x Triple Extender - 6 x DX Cartridge
9	3 x Single Canister + 3 x Triple Extender - 9 x DX Cartridge
12	4 x Single Canister + 4 x Triple Extender - 12 x DX Cartridge

**B Mounting**

T	Backplate/Tray
---	----------------

**C Insert**

G	Green
---	-------

**D Feed Type**

Configuration	1-6	A	110v	
		B	220v	
		C	415v	
	9,12	D	110v	
		E	220v	
		F	415v	
		H	Hydraulic	
		1-6	P	Pneumatic
			9,12	Q
		N	None	

**E Frequency**

1	50 Hz
2	60 Hz
N	Not Applicable

**F Flow Indicator**

V	Visual Indication	
D	Digital Indication	*
C	Both	*
N	None	

**G Electrical Start/Stop Control Panel**

1	Yes
N	None

**H Overspill Sensor**

1	Yes
N	None

**I Condition Monitoring**

1	Tan Delta	*
2	Particle Counter	*
3	Both	*
N	None	

**J Interconnection Type**

1	Pipework - SS
---	---------------

**K Certification**

1	Standard
2	Atex Zone 1
3	Atex Zone 2

**L Painting**

(Motor and Pump Only)	
N	None
P	Yes

\* Only available in conjunction with Option G1

