



PT Series

Tank Top Filters



PT Series

Tank Top Filters

PT Series Disposable Filter Cartridge

The new PT series filter is available in two diameters and three lengths for flow ranges from 5-50 gpm. The PT2 and PT4 filter cartridges utilize Microglass III media in 2, 5, 10 and 20 microns for the industry's best particle removal efficiency and retention.

This unique design simply threads into a ported tank ring, which can be welded to a metal reservoir or adapted for a plastic reservoir.

The disposable filter cartridge is a single-piece construction, which incorporates the nylon cover and integral 25 psi bypass valve. The flow path is inside-out and requires no special tools for service.

This concept assures minimal installation costs with the least space requirements for return line applications.

For more details or pricing information, please contact your local Parker distributor or the Hydraulic Filter Division at 1-800-253-1258.



The PT Series Filter combines high efficiency Microglass filtration with low cost installation featured in a new patented element design.



Plastic Tank Overview

Parker Hannifin Hydraulic Filter Division worked with a leading manufacturer of rotational molding custom-engineered parts to mold unique features into a rotationally molded hydraulic reservoir that accepts a PT Series disposable filter cartridge. The benefits of designing the new filter into your next rotationally molded reservoir include:

- Reduced installation and hardware costs
- Reduction of external space required for filter
- Flexible tank geometry found in the rotational molding process
- Multiple material choices (cross-linked polyethylene, nylon 6 and nylon 11)
- Multiple port options
- Light weight

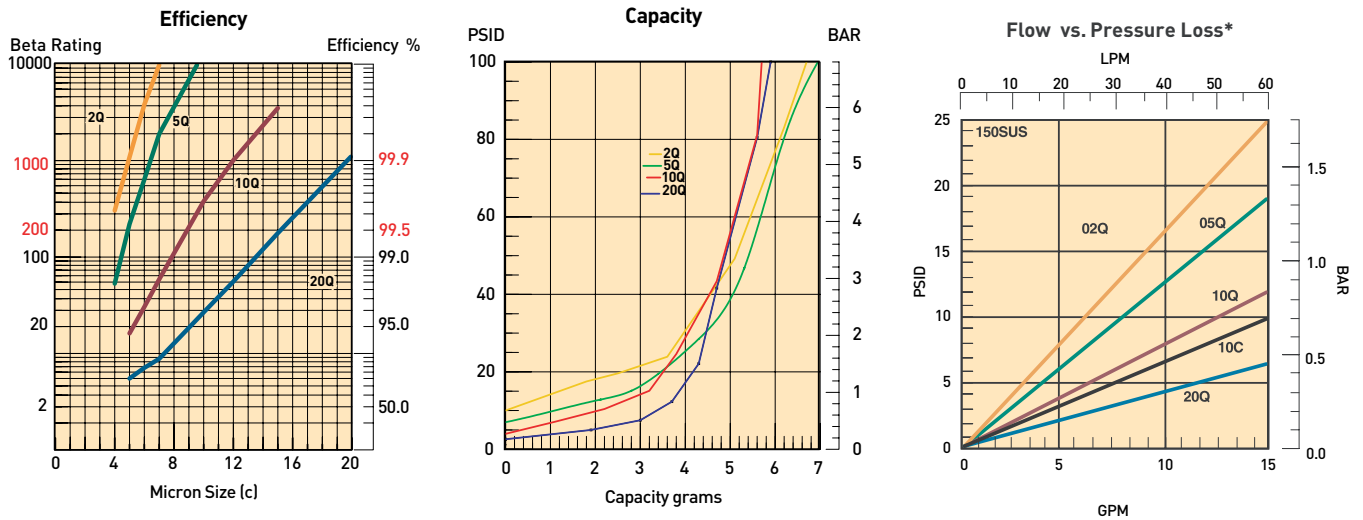
The PT Series filter concept, coupled with a custom rotationally molded tank, offers an innovative solution to meet your hydraulic system hardware needs.



The PT Series Filter combines high efficiency microglass filtration with low cost installation featured in a new patented element design. A hydraulic reservoir cutaway reveals the molded features that are incorporated into the design.

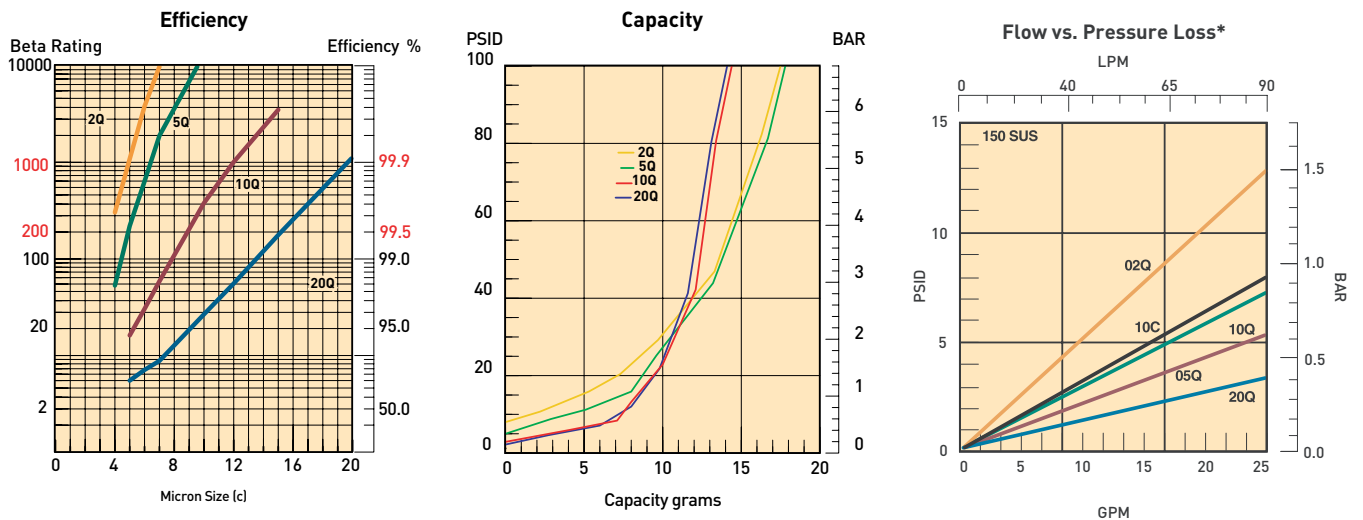
Performance Data

PT2-1 Element Performance



Results typical from Multi-pass tests run per test standard ISO 16889 @ 10 gpm to 100 psid terminal - 10 mg/L BUGL
 Refer to Appendix on pages 227-228 for relationship to test standard ISO 4572.

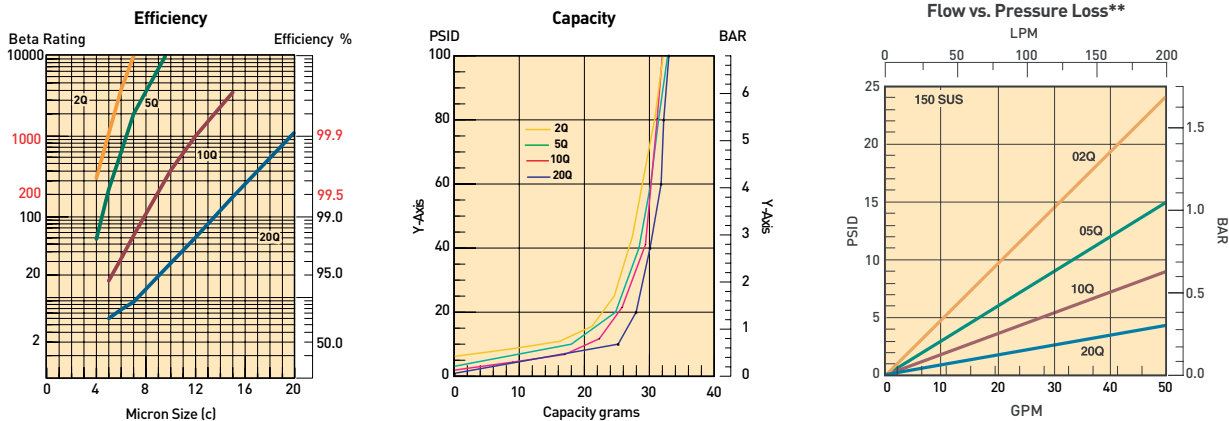
PT2-2 Element Performance



Results typical from Multi-pass tests run per test standard ISO 16889 @ 15 gpm to 100 psid terminal - 10 mg/L BUGL
 Refer to Appendix on pages 227-228 for relationship to test standard ISO 4572.

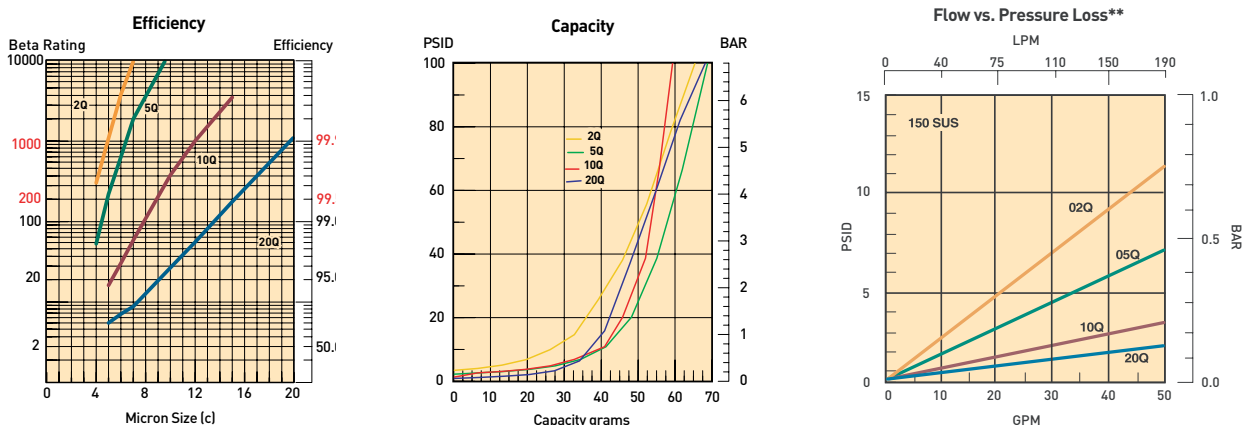
*Note: Pressure drop calculations are based on SAE-12 porting.

PT4-1 Element Performance



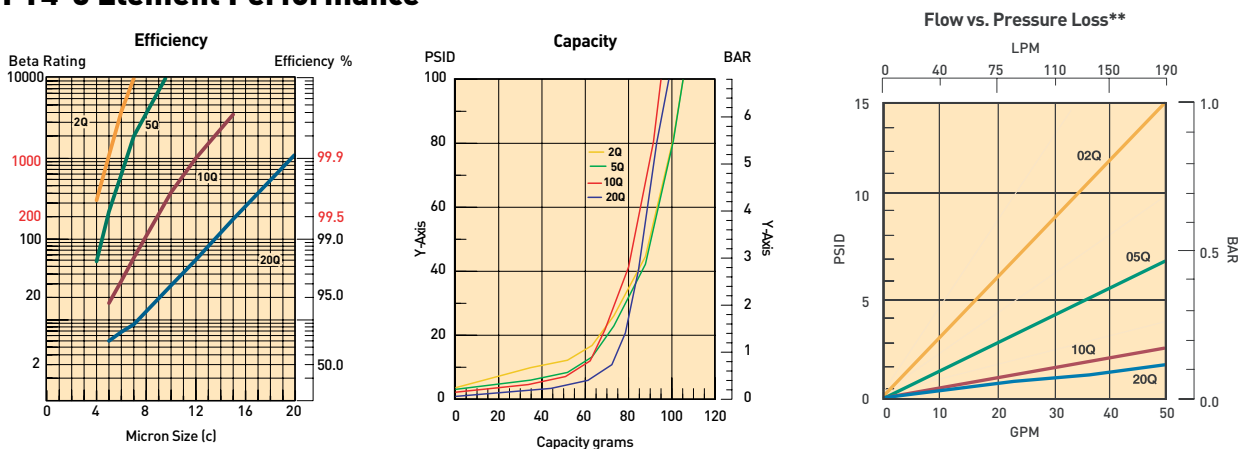
Results typical from Multi-pass tests run per test standard ISO 16889 @ 15 gpm to 100 psid terminal - 10 mg/L BUGL
Refer to Appendix on pages 227-228 for relationship to test standard ISO 4572.

PT4-2 Element Performance



Results typical from Multi-pass tests run per test standard ISO 16889 @ 30 gpm to 100 psid terminal - 10 mg/L BUGL
Refer to Appendix on pages 227-228 for relationship to test standard ISO 4572.

PT4-3 Element Performance



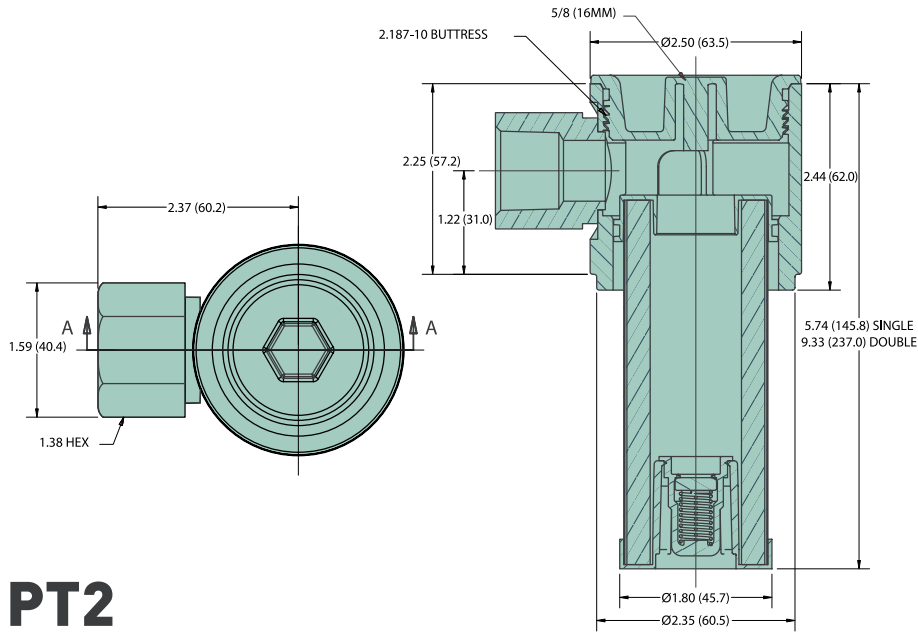
Results typical from Multi-pass tests run per test standard ISO 16889 @ 45 gpm to 100 psid terminal - 10 mg/L BUGL
Refer to Appendix on pages 227-228 for relationship to test standard ISO 4572.

*Note: Pressure drop calculations are based on SAE-16 porting.



PT Series

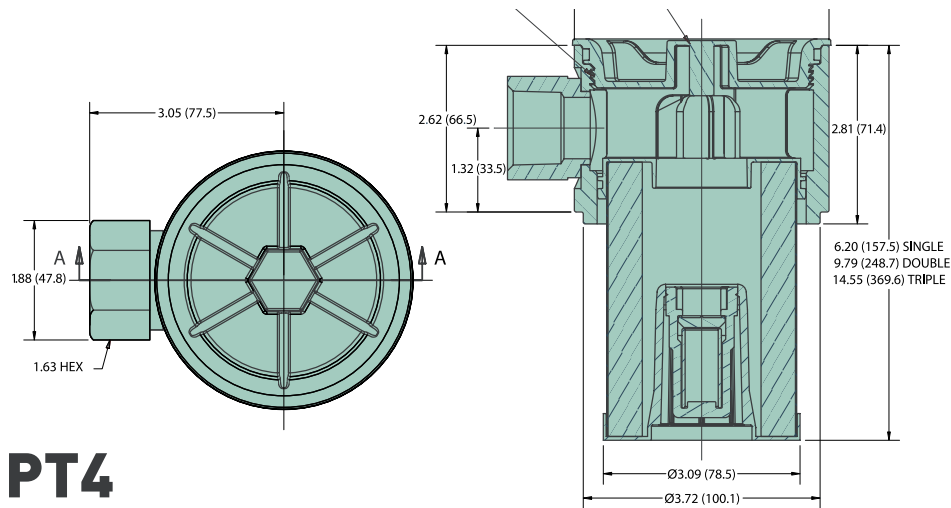
Tank Top Filters



PT2

Dia. of tank cutout: 2.37 (60.2)

Linear measure: Inches (mm)



PT4

Dia. of tank cutout: 3.75 (95.3)

Ordering Information - Replacement Elements

Media	PT2-1	PT2-2	PT4-1	PT4-2	PT4-3
20Q	936753	936757	936745	936749	936879
10Q	936752	936756	936744	936748	936878
05Q	936751	936755	936743	936747	936877
02Q	936750	936754	936742	936746	936876

Tank Rings

Port Size	PT2	PT4
3/4" NPT	936929	-
1" NPT	-	936931
SAE 8	936941	-
SAE 12	936942	-
SAE 16	-	936943